



Individual Section Introduction

BME 410: Professional Topics

Question of the Day

What are we doing here so early?

Outline for Today

- Question of the day
- Who am I?
- Who are you?
- What do I expect from you?
- How are you going to be graded?
- What are the host's responsibilities?
- What is the presentation order?
- Answer your questions!

Who am I?



- Originally from Florida



Who am I?

- Originally from Florida
- B.S. in Engineering Science from University of Florida in 1996



Who am I?

- Originally from Florida
- B.S. in Engineering Science from University of Florida in 1996
- Biomedical Engineer for Computer Motion, Inc.



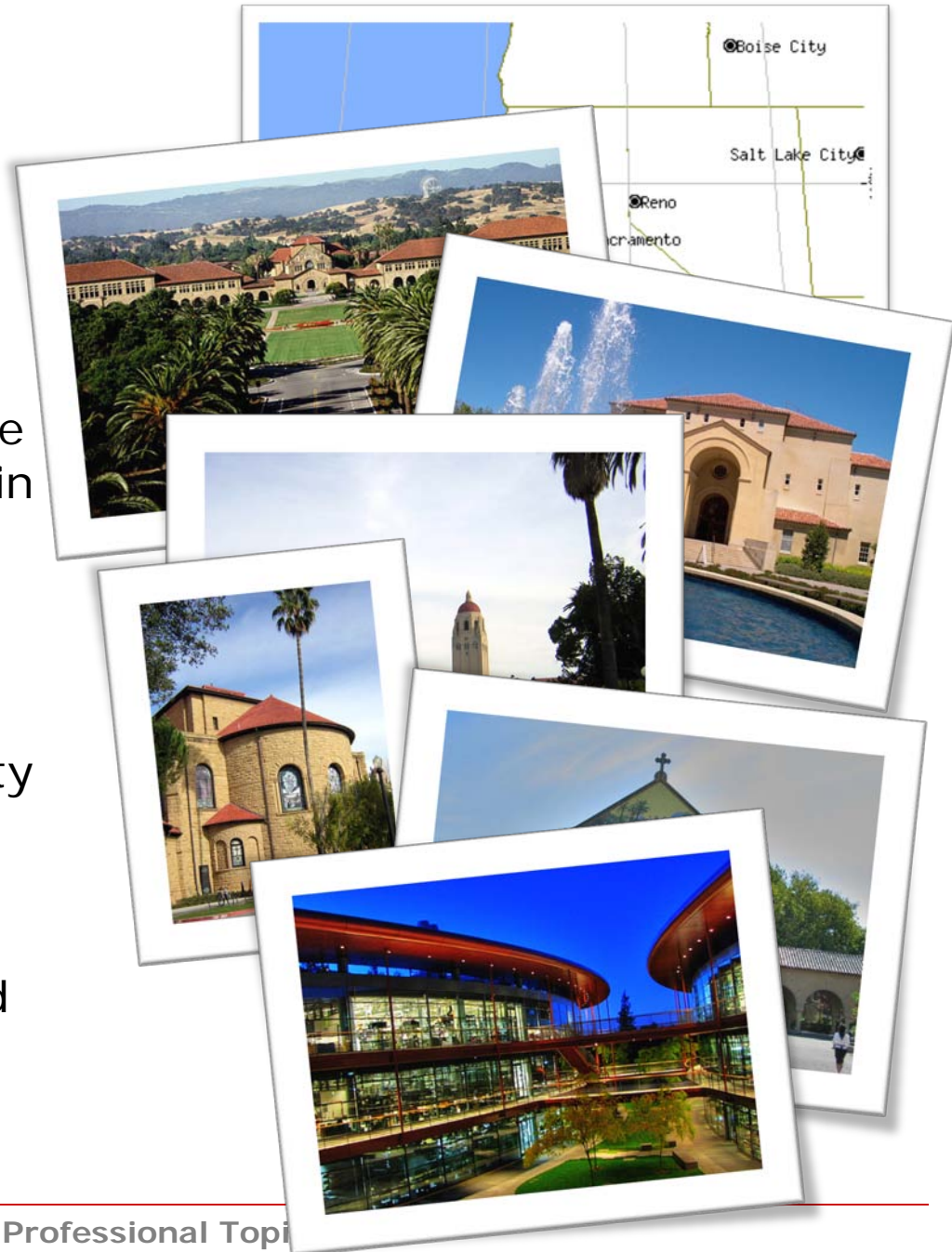
Who am I?

- Originally from Florida
- B.S. in Engineering Science from University of Florida in 1996
- Biomedical Engineer for Computer Motion, Inc.
- Ph.D. in Mechanical Engineering from University of Florida in 2006



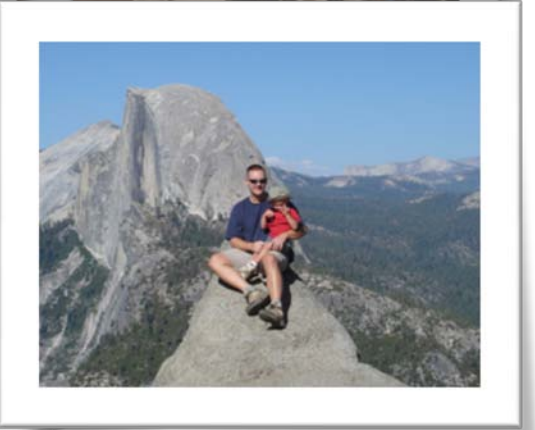
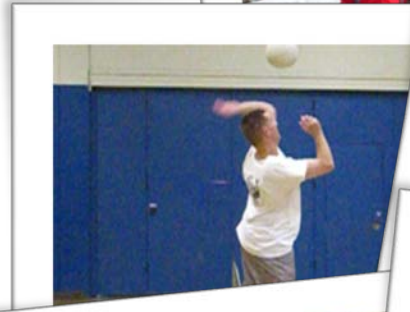
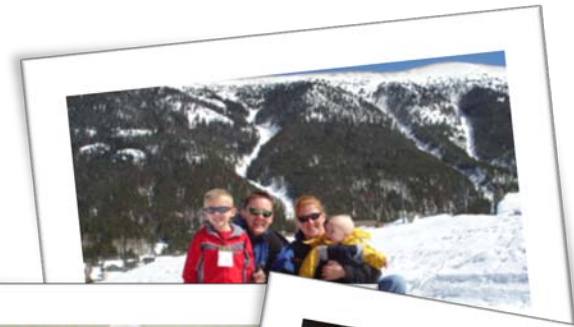
Who am I?

- Originally from Florida
- B.S. in Engineering Science from University of Florida in 1996
- Biomedical Engineer for Computer Motion, Inc.
- Ph.D. in Mechanical Engineering from University of Florida in 2006
- Postdoc & Engineering Research Associate in Bioengineering at Stanford



Who am I?

- Originally from Florida
- B.S. in Engineering Science from University of Florida in 1996
- Biomedical Engineer for Computer Motion, Inc.
- Ph.D. in Mechanical Engineering from University of Florida in 2006
- Postdoc & Engineering Research Associate in Bioengineering at Stanford
- Married with two children
- Enjoy learning, volleyball, biking, and being outdoors



Who are you?

1. Where were you born?
2. What is something unique about where you grew up?
3. What sports do you like?
4. Why are you taking Professional Topics?
5. What do you want to do after you graduate?

Outline for Today

- Question of the day
- Who am I?
- Who are you?
- What do I expect from you?
- How are you going to be graded?
- What are the host's responsibilities?
- What is the presentation order?
- Answer your questions!

What do I expect from you?

1. PowerPoint presentation (10-15 min)
2. Questions & answers (5-10 min)
3. Bring your own laptop and flash drive
4. Keep it simple, clear, and large enough
5. Use text, pictures, videos, animations, and visual aids
6. Dress for the part (e.g., business casual)
7. Practice, practice, practice...

How are you going to be graded?

Grading Rubric for AE/BME/ME 410 Oral Presentations

Date _____

Presenter's Name _____

Objectives	Unsatisfactory Performance	Below Average	Above Average	Exemplary Performance	Earned <input type="checkbox"/> Points
ORGANIZATION	0-12 points Audience cannot understand presentation because there is no sequence of information. Student uses no slides.	13-18 points Audience has difficulty following presentation because student jumps around. Student uses occasional slides that rarely support the presentation subject.	19-26 points Student presents information in logical sequence which audience can follow. Slides related to presentation.	25-35 points Student presents information in logical, interesting sequence which audience can follow. Student uses slides effectively to reinforce presentation.	
MECHANICS	0-9 points Presentation has several spelling and/or grammatical errors. Student mumbles.	10-16 points Presentation has a few misspellings and/or grammatical errors. Student's voice is low student	17-23 points Presentation has almost no misspellings and/or grammatical errors. Voice is clear. Student pronounces most words	24-30 points Presentation has no misspellings or grammatical errors. Student uses a clear voice and correct, precise pronunciation of terms.	

What are the host's responsibilities?

1. Sit in the front row
2. Introduce the presenter (education, background, etc.) and plans for the future
3. Name the topic for the presentation
4. After the presentation, thank the presenter, initiate applause, and ask the audience for questions
5. After the questions, thank the presenter again and initiate applause

What is the presentation order?

PRESENTATION ORDER BME 410 ~ Professional Development

Date	Time	Presenter	Host
Tue Nov 8 th	8:10 – 8:30	1	
	8:30 – 9:00	Dr. Susan Blanchard (ABET Reviewer)	
	9:00 – 9:25	2	
Thur Nov 10 th	8:10 – 8:35	3	
	8:35 – 9:00	4	
	9:00 – 9:25	5	
Tue Nov 15 th	8:10 – 8:35	6	
	8:35 – 9:00	7	
	9:00 – 9:25	8	
Thur Nov 17 th	8:10 – 8:35	9	
	8:35 – 9:00	10	
	9:00 – 9:25	11	
Tue Nov 22 nd	8:10 – 8:35	12	
	8:35 – 9:00	13	
	9:00 – 9:25	14	
Tue Nov 29 nd	8:10 – 8:35	15	
	8:35 – 9:00	16	
	9:00 – 9:25	17	

Outline for Today

- Question of the day
- Who am I?
- Who are you?
- What do I expect from you?
- How are you going to be graded?
- What are the host's responsibilities?
- What is the presentation order?
- **Answer your questions!**

For Next Time...

- Continue to prepare your presentations
- Practice, practice, practice...
- For more primers, see class references:
<http://rrg.utk.edu/resources/BME410/references.html>